

Webinar
PALAZZETTI E PALESTRE
DALLA CITTÀ ALLA SCUOLA

**REALIZZAZIONE DEL NUOVO POLO SCOLASTICO
DI GRUMOLO DELLE ABBADESSE**

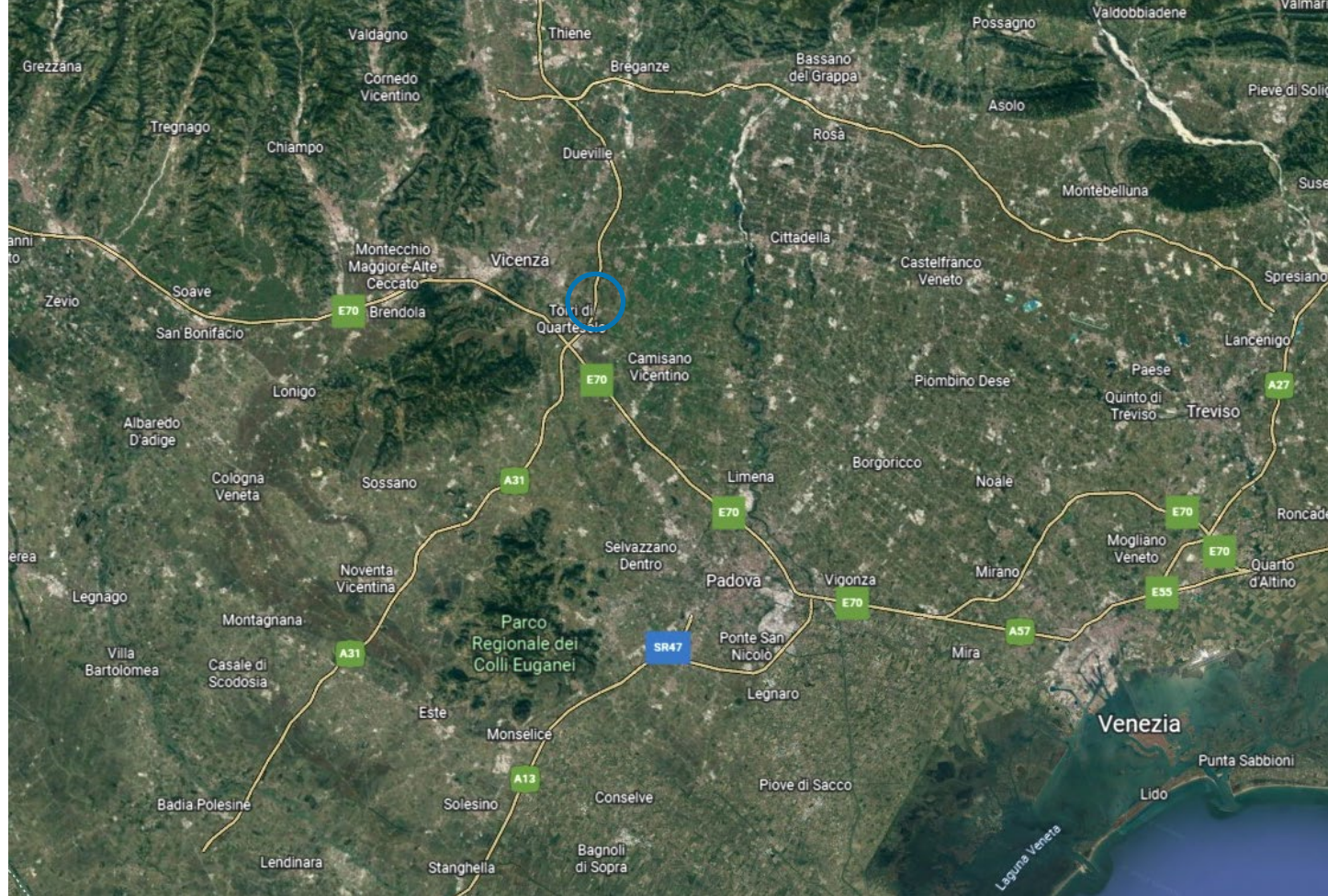
Arch. Bruno Sbalchiero

TSPORT

SPORT & IMPIANTI

07/11/2022

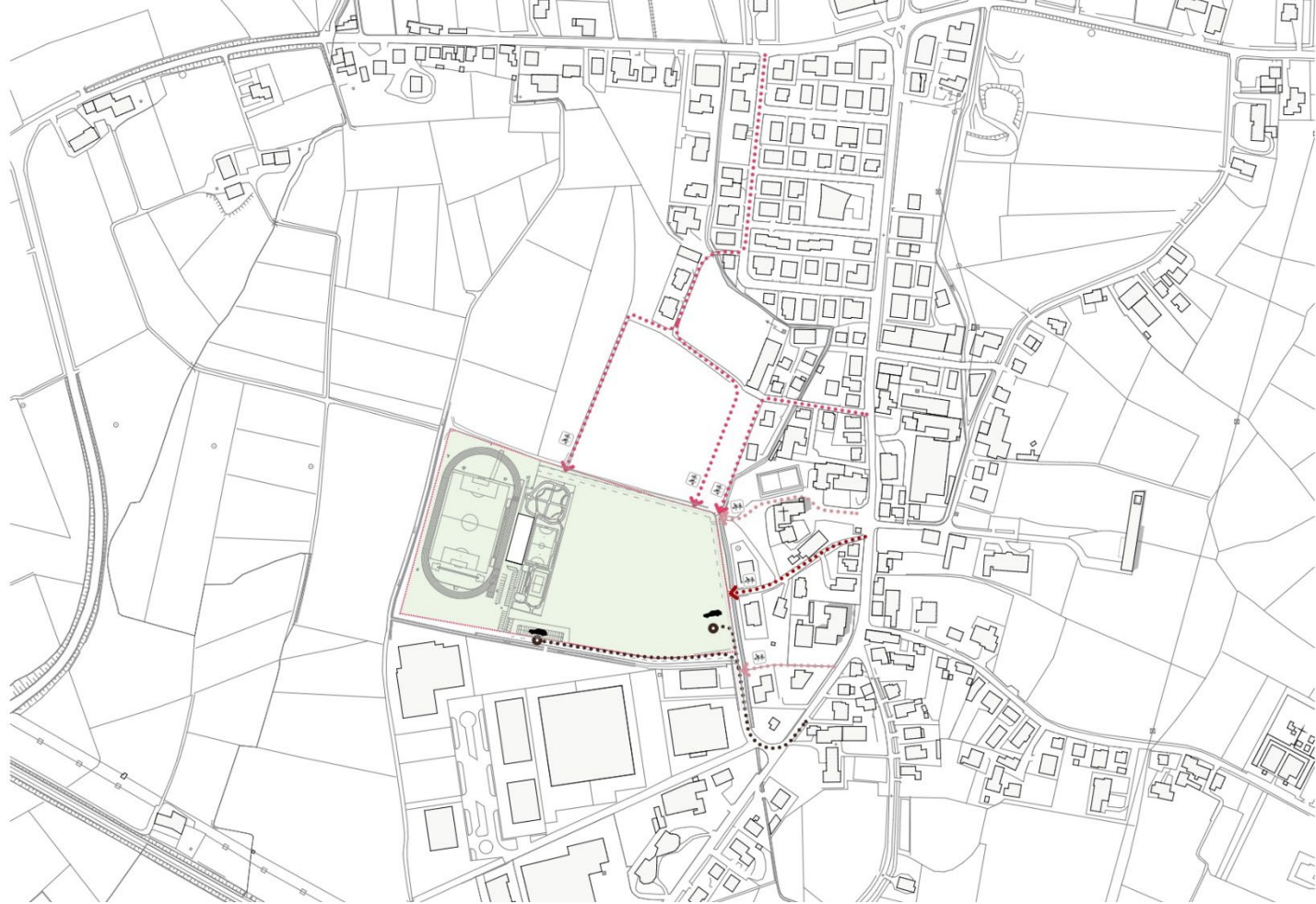
www.sporteimpianti.it







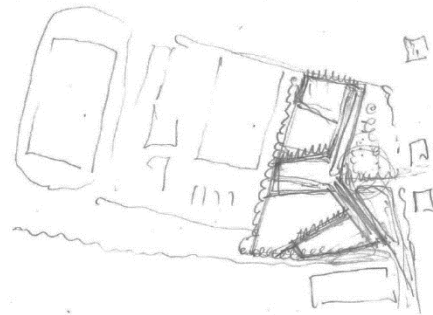
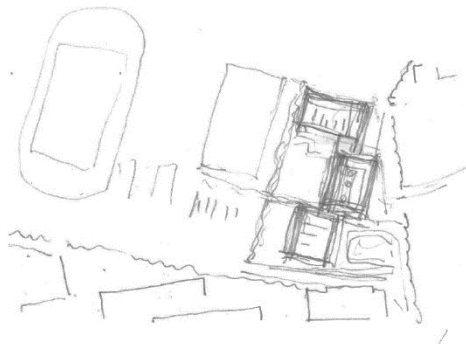
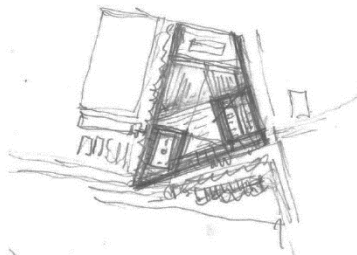
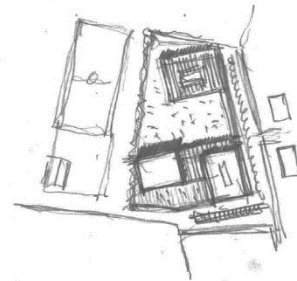
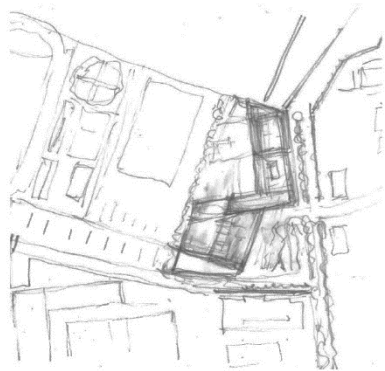
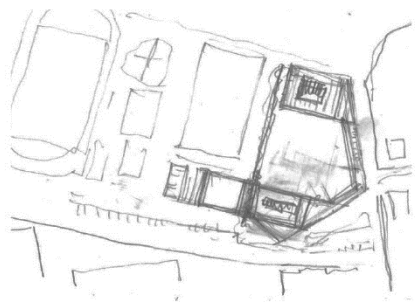


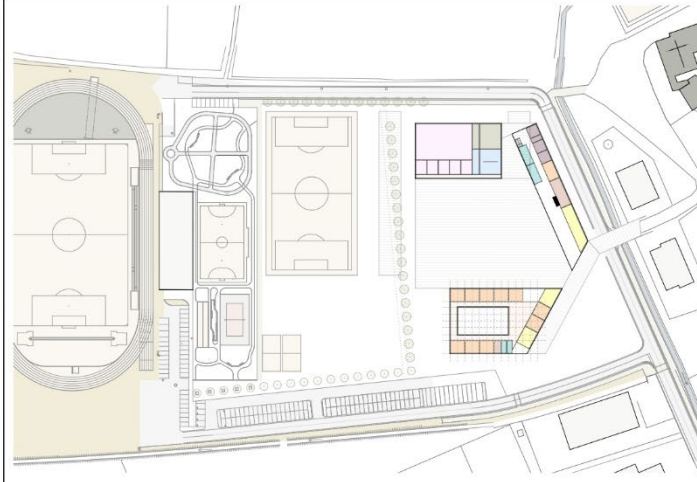
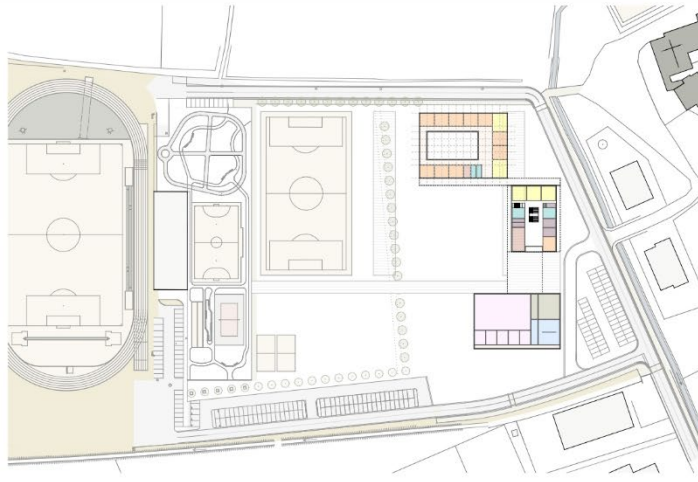
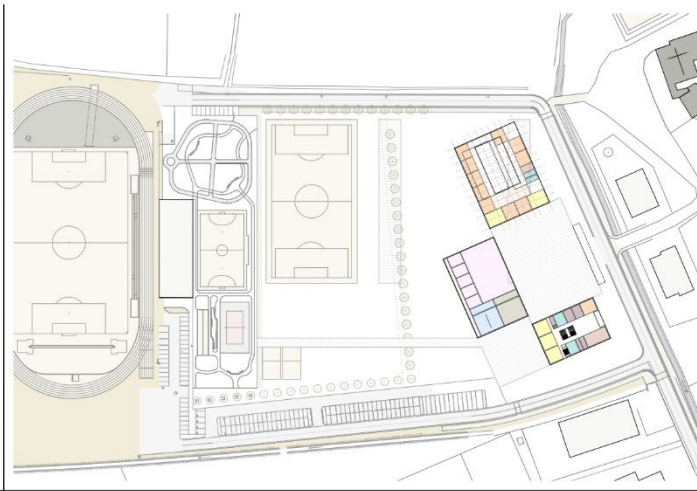
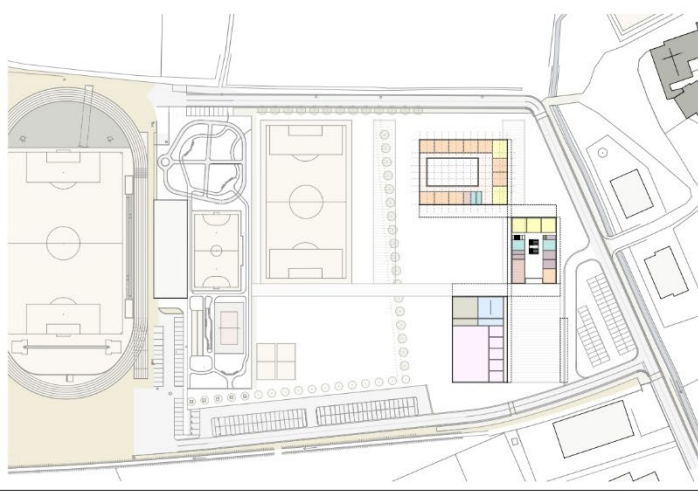


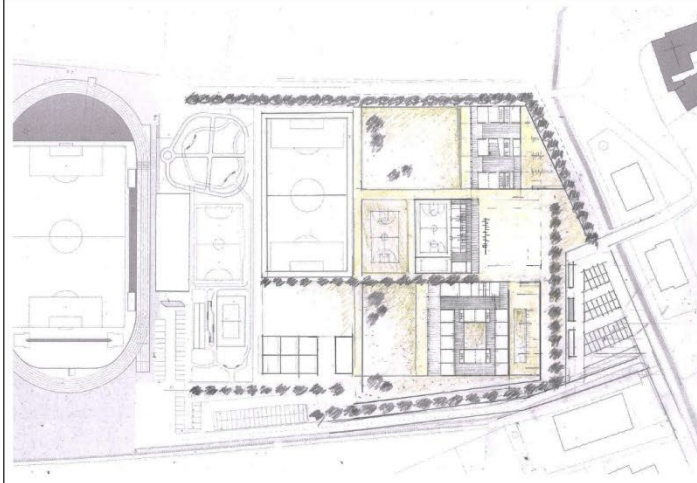
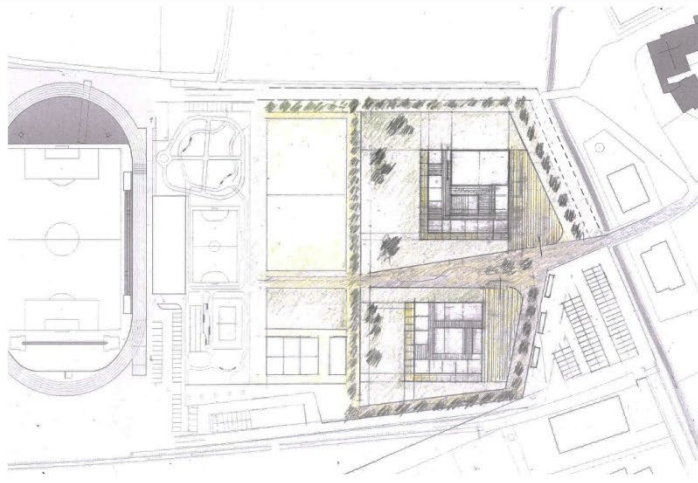
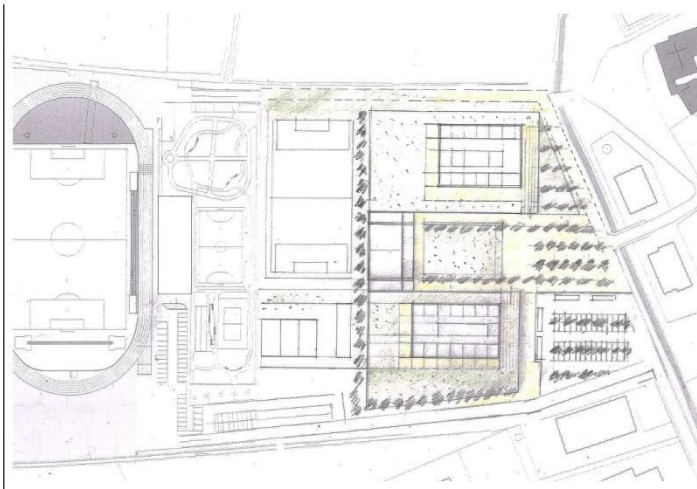
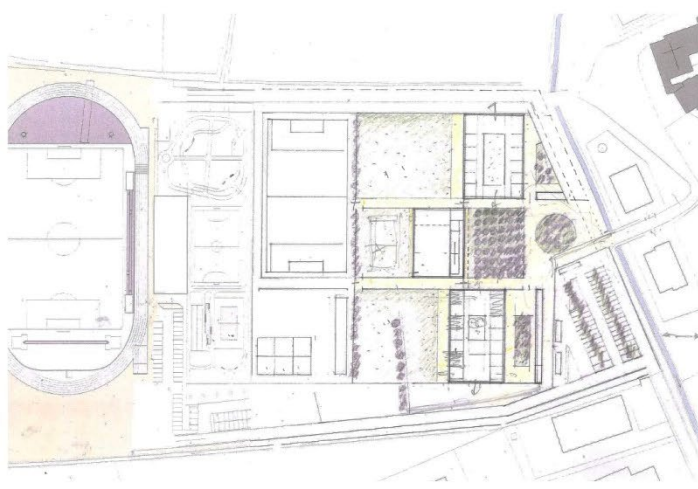


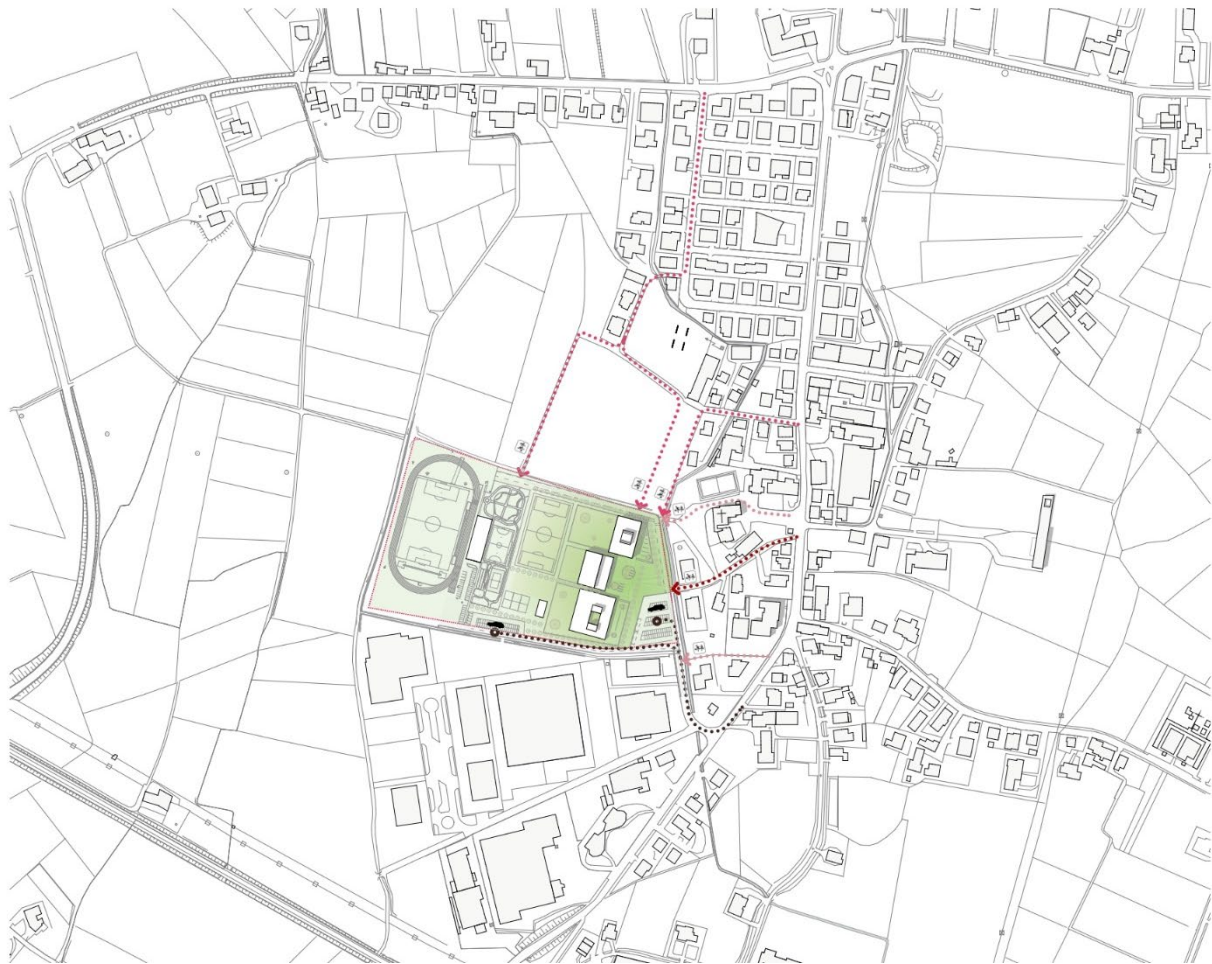


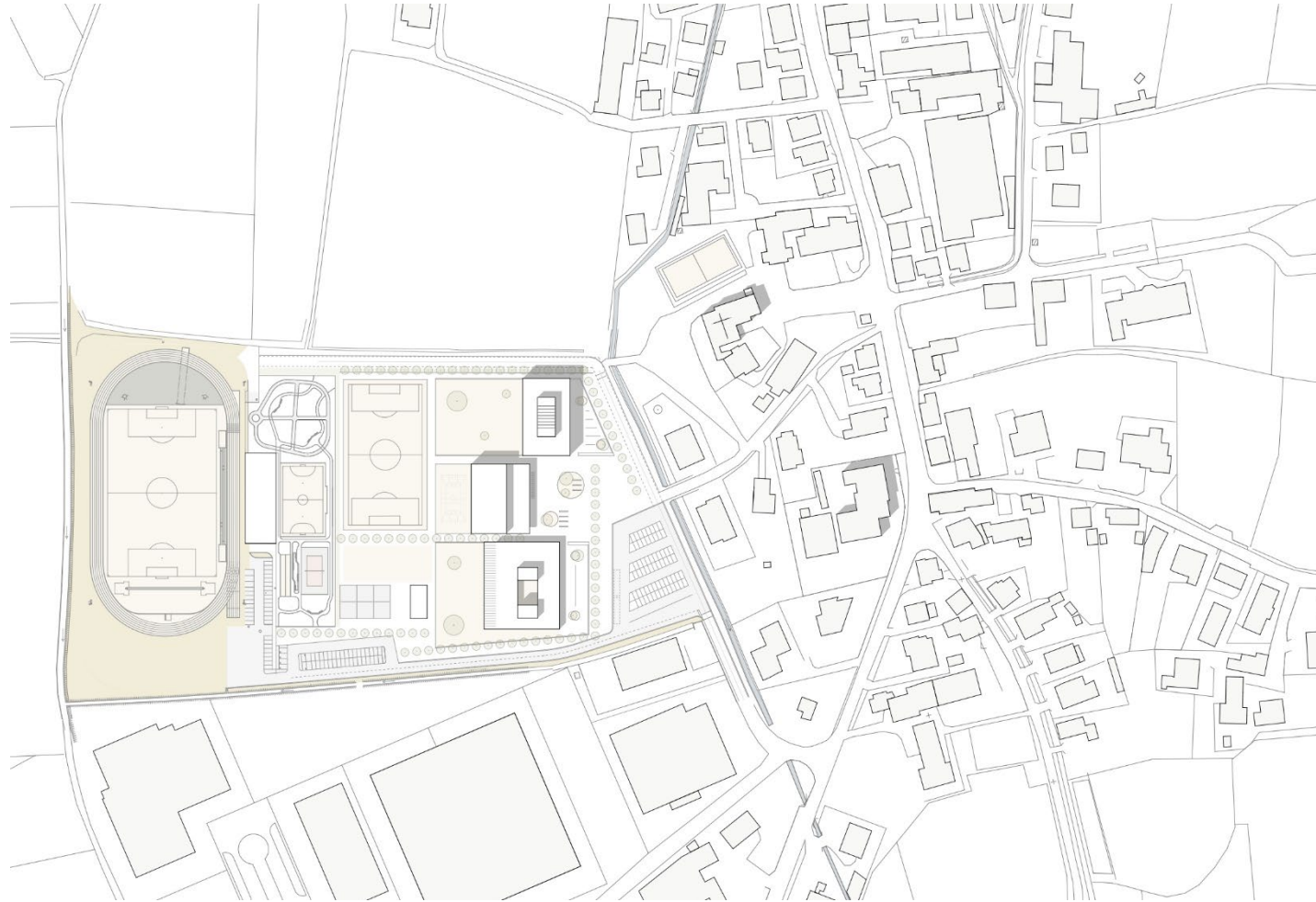


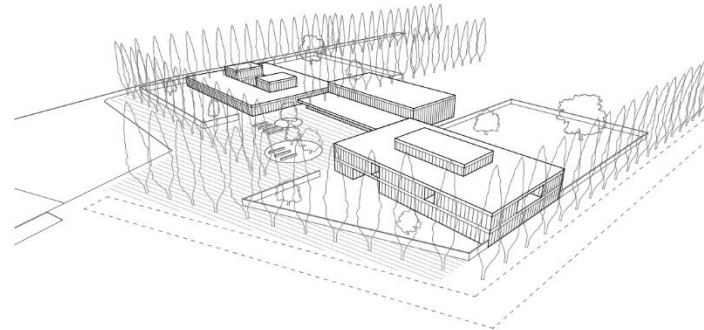
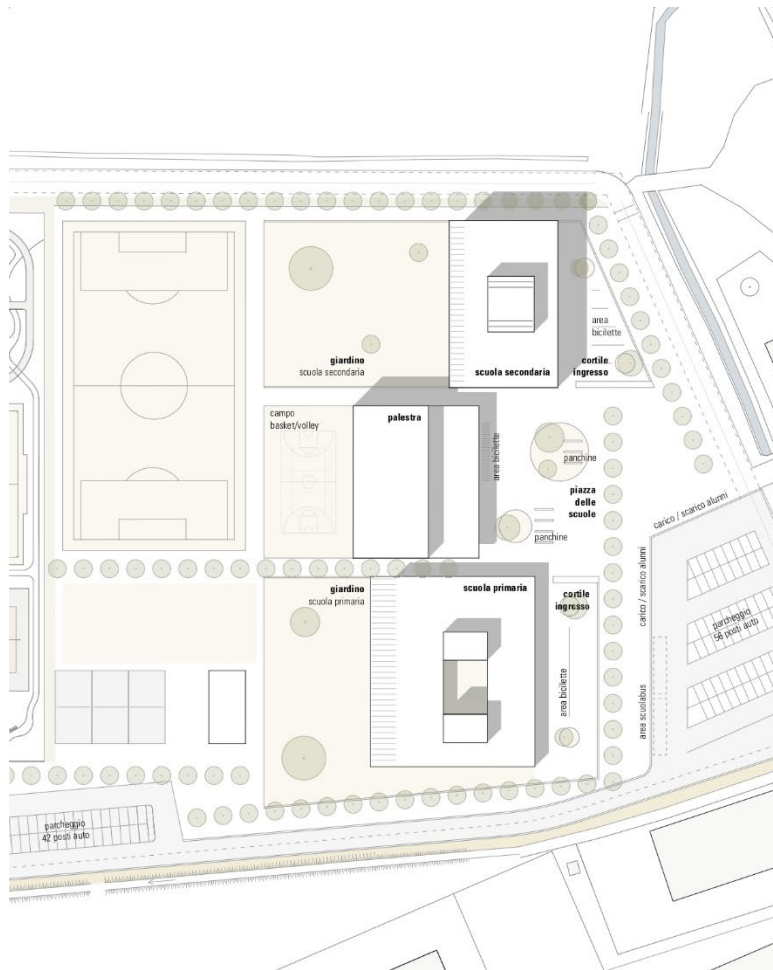




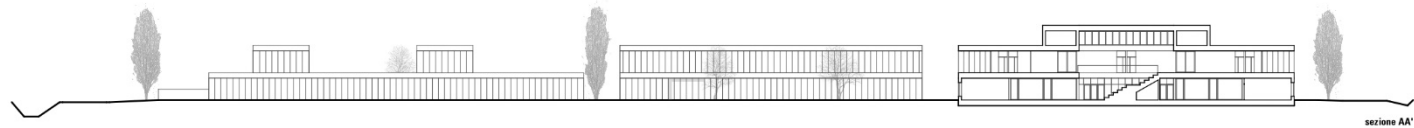
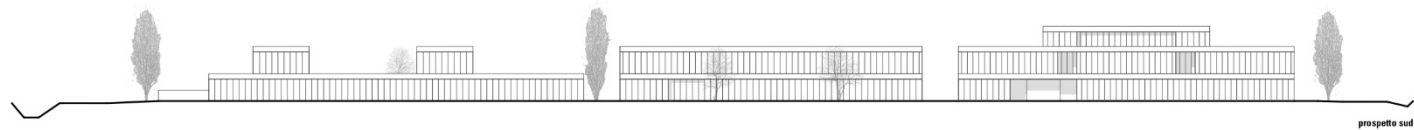
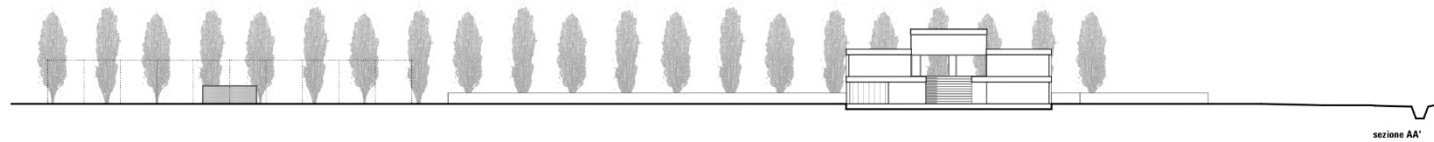
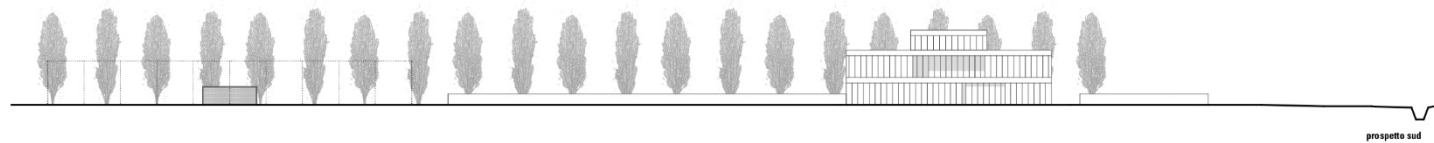


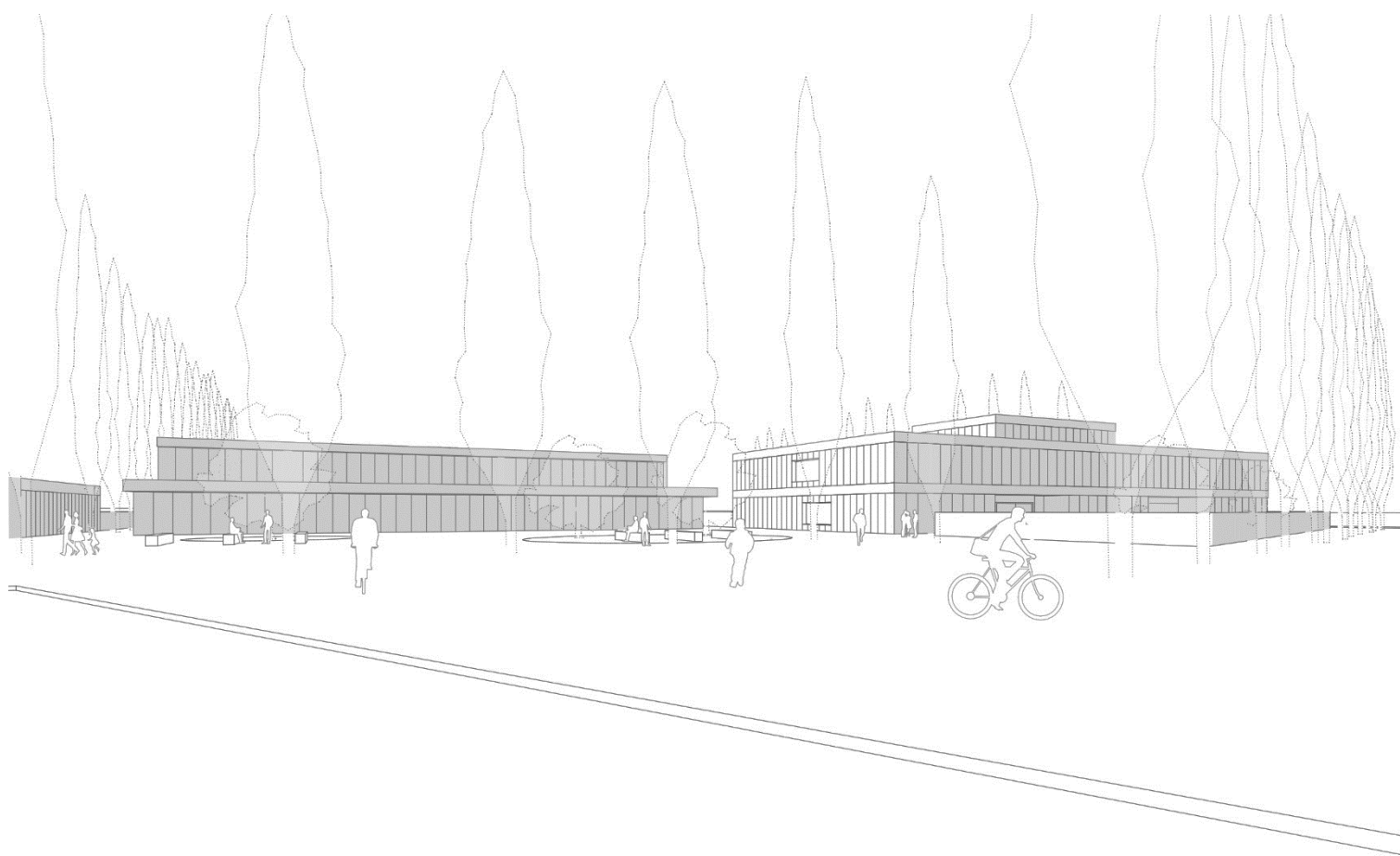


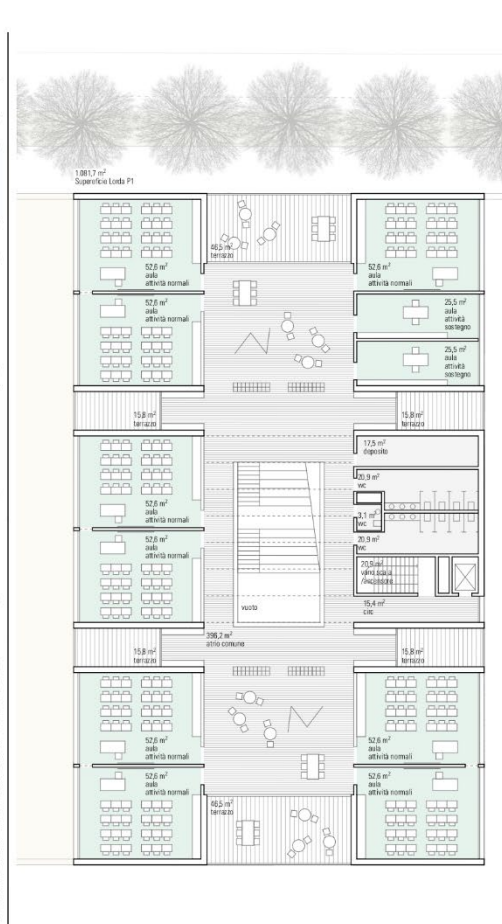
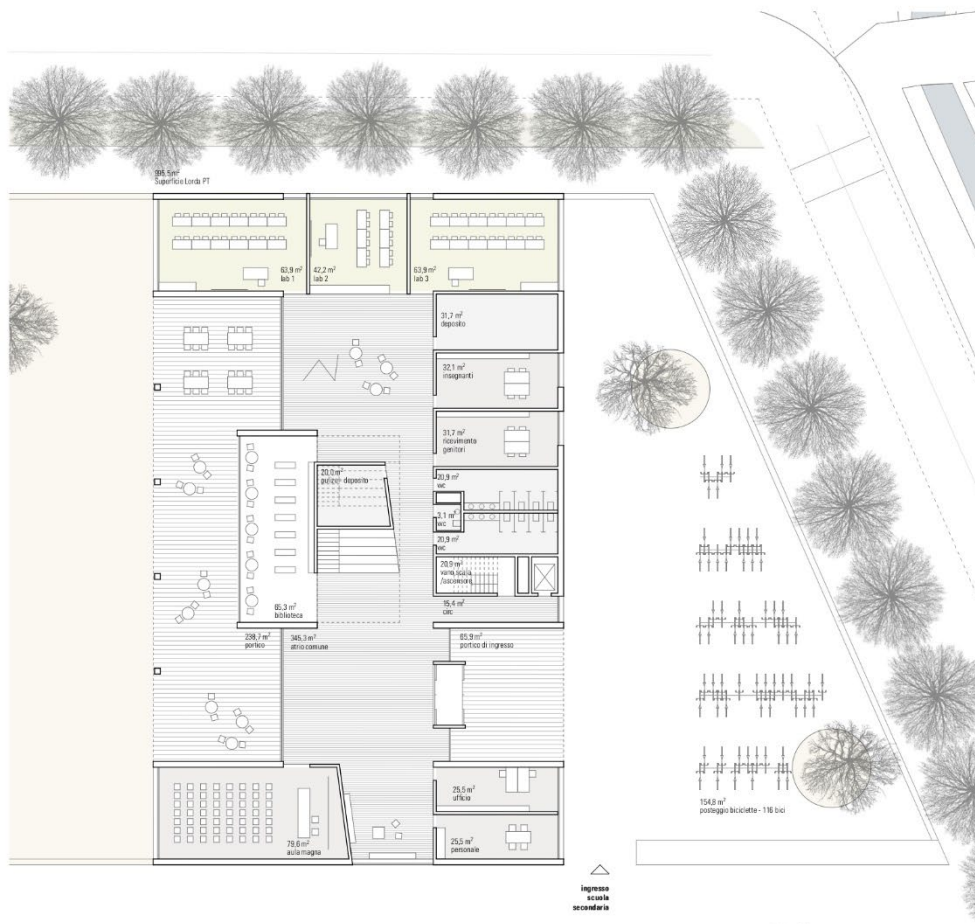


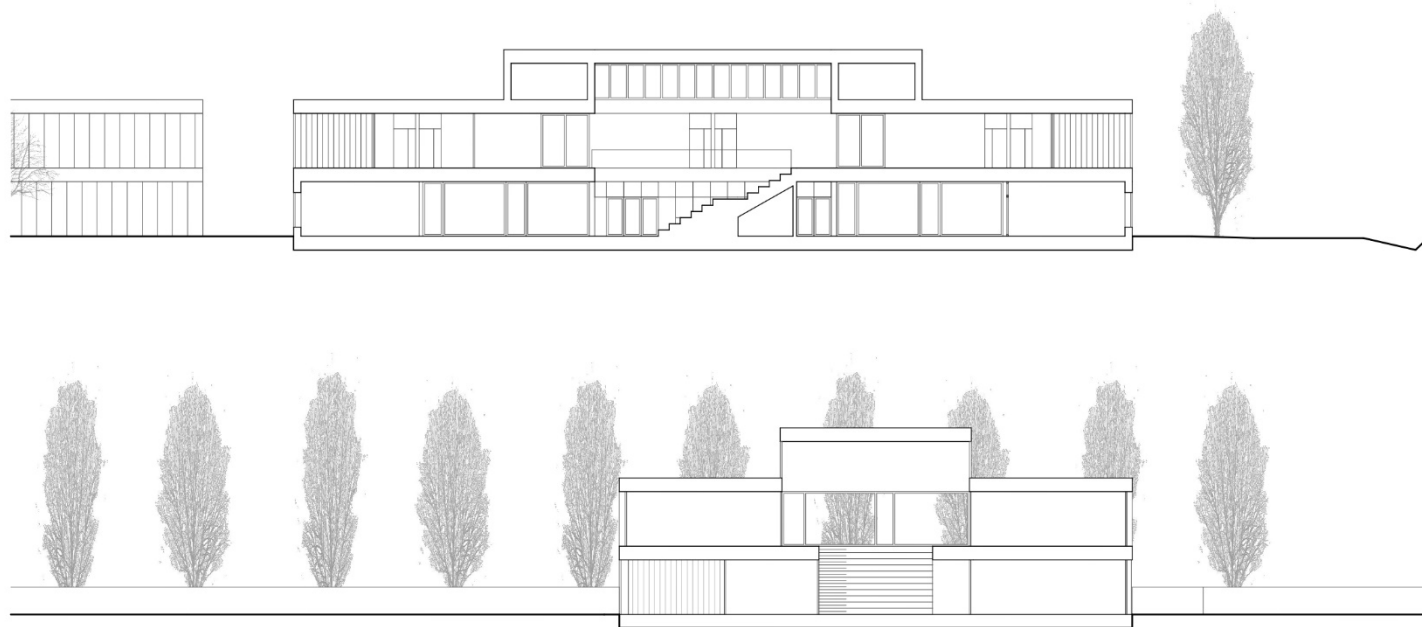






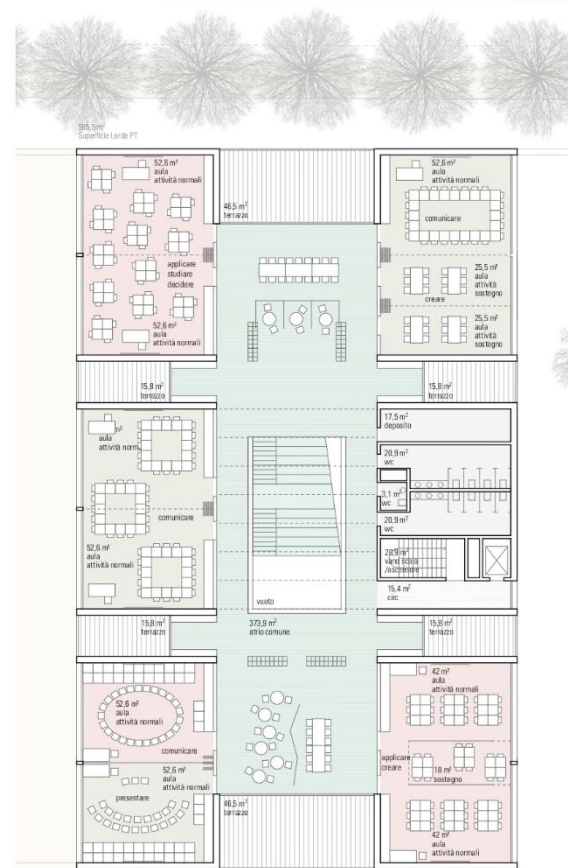
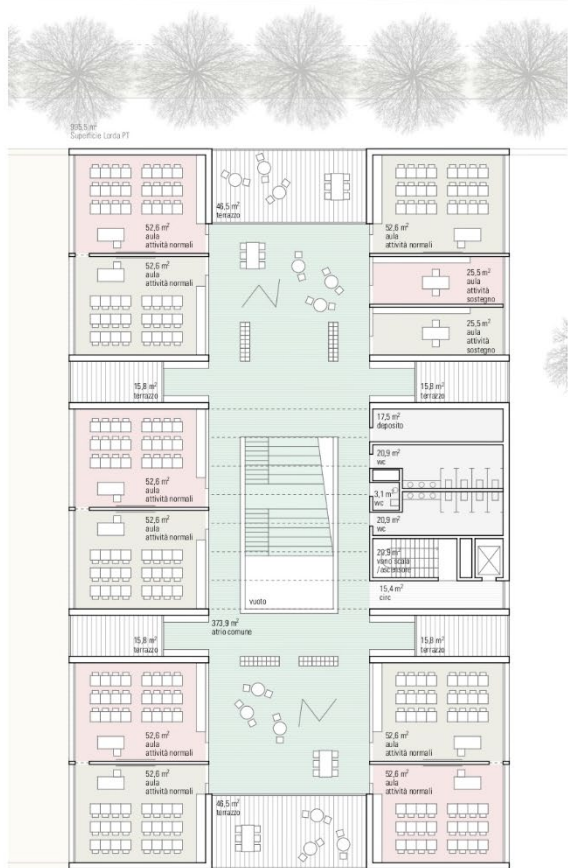


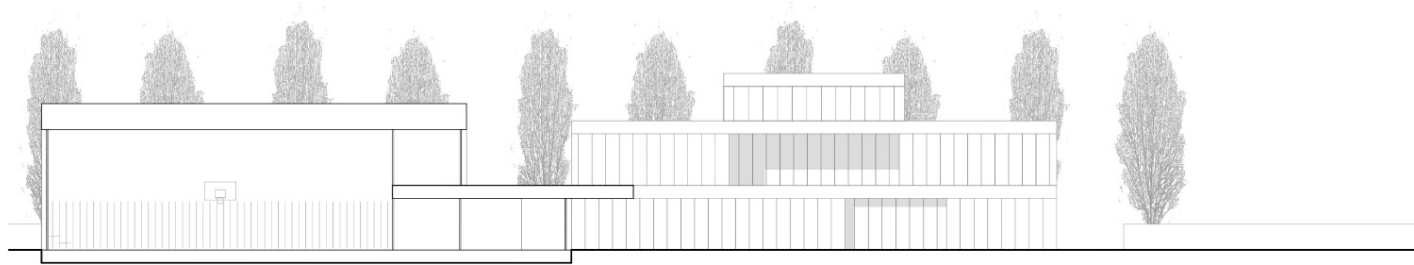




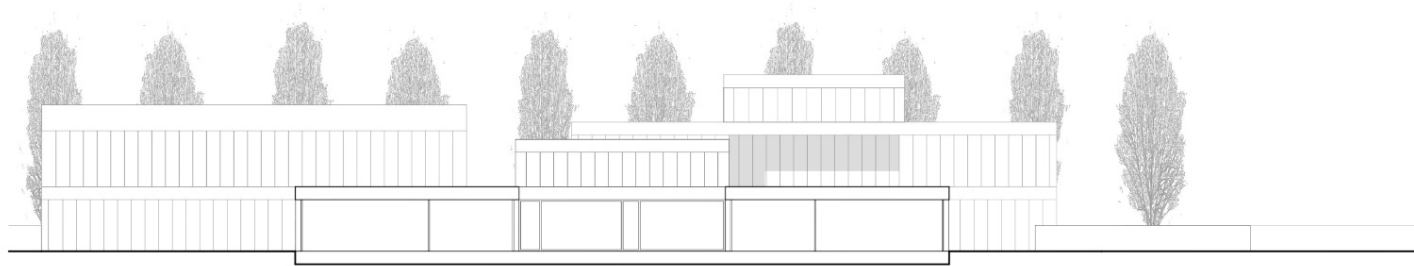




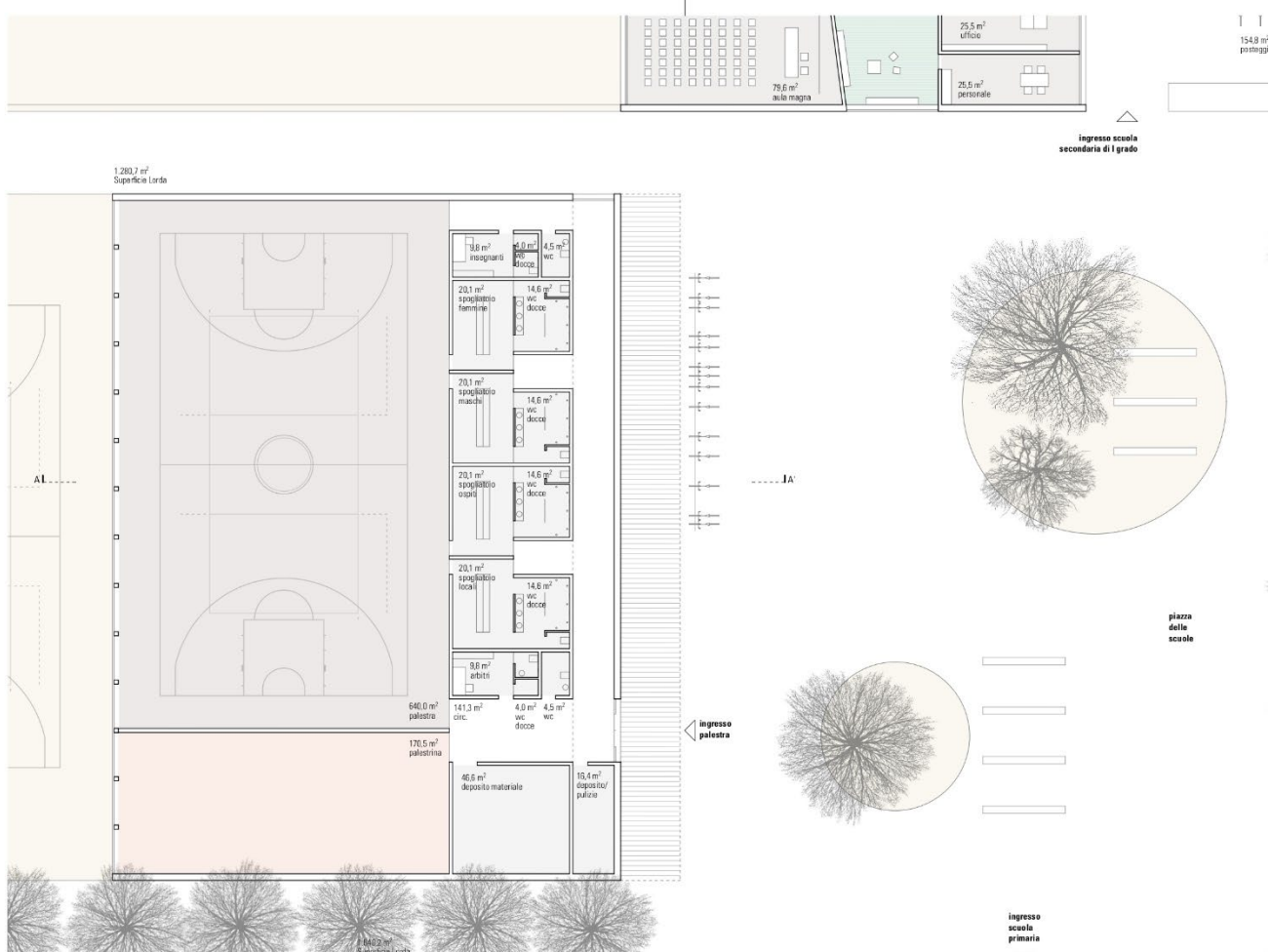


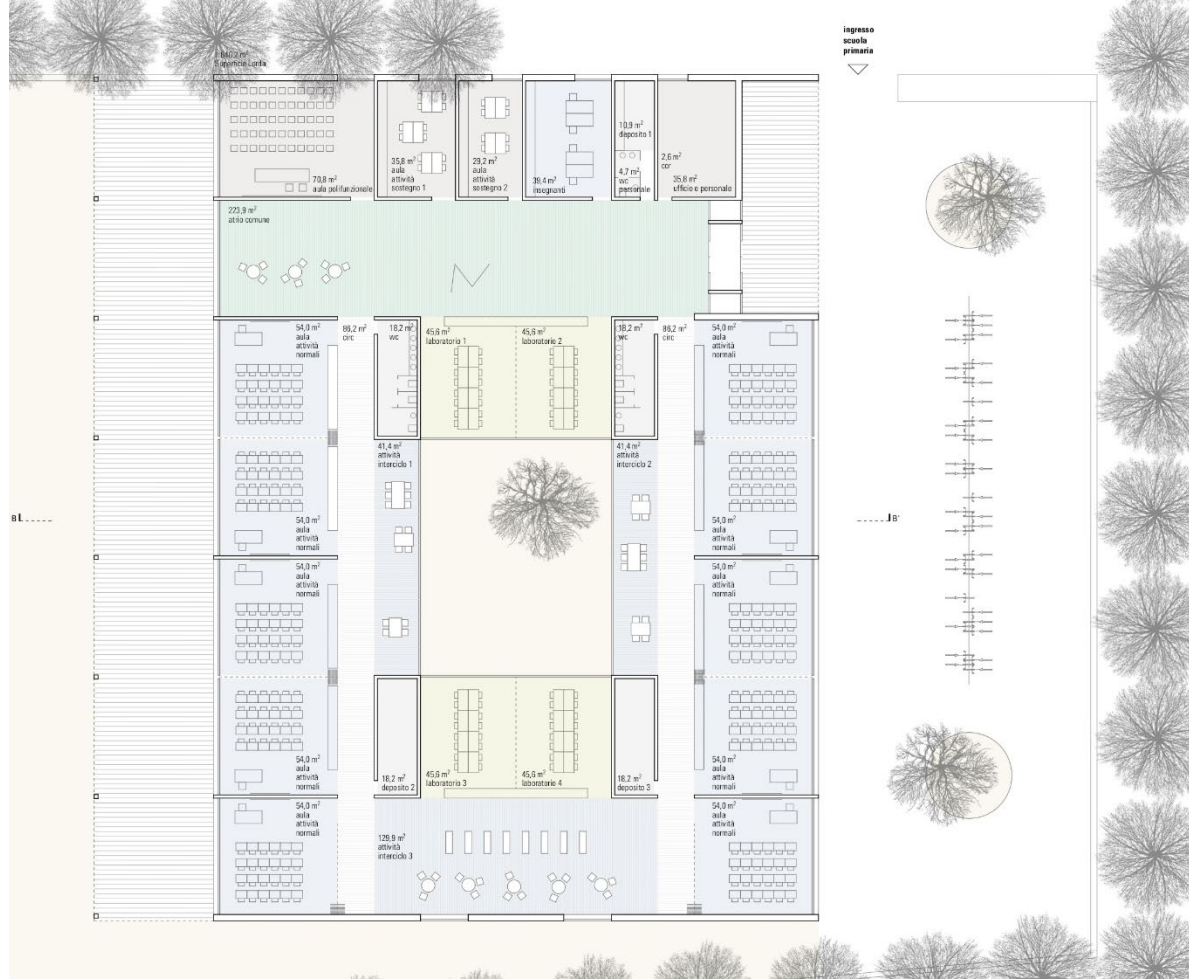


sezione AA' - 1:200



sezione BB' - 1:200





Webinar
PALAZZETTI E PALESTRE
DALLA CITTÀ ALLA SCUOLA

Grazie per l'attenzione

Arch. Bruno Sbalchiero

AS+ Architetti Associati di Alberto Albiero e Bruno Sbalchiero

Contrà Sant'Ambrogio 19 - 36100 Vicenza

tel 0444-881731

www.aessepiu.com | studio@aesepiu.com

TSPORT

SPORT & IMPIANTI

07/11/2022

www.sporteimpianti.it